

Pathmaker

2,392+ sq.ft.

4-5 Bedrooms

2.5-3.5 Bathrooms



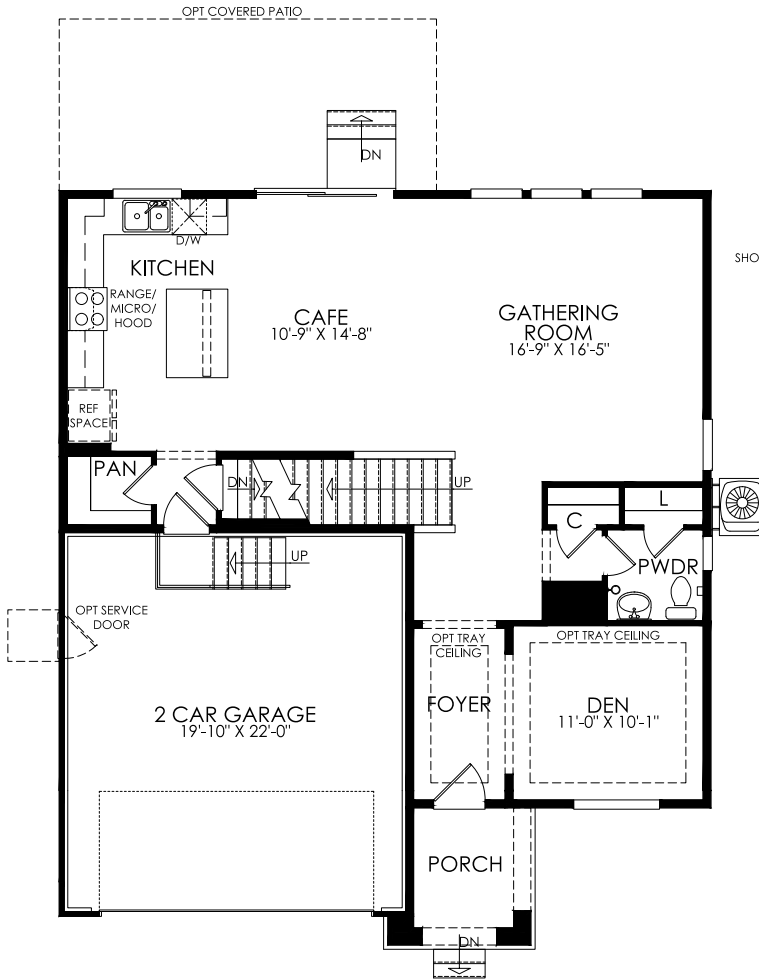
Home Exterior A



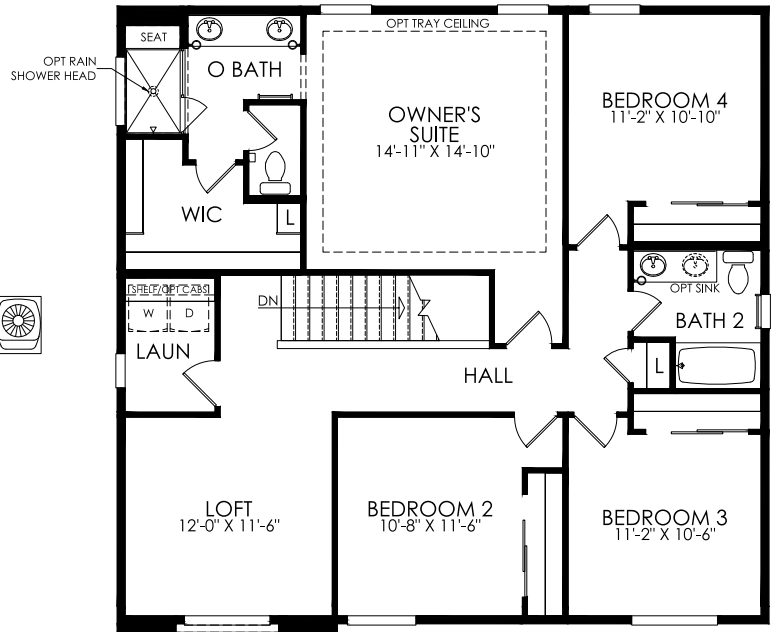
Home Exterior B



Home Exterior C



MAIN FLOOR



UPPER FLOOR

The Aurora Highlands

3900 E. 470 Beltway

Aurora, CO 80019

720-594-6116

Additional options available. Please see sales consultant for details.



In our continuing effort to improve our product, Pulte Homes reserves the right to make changes or modifications to plans, specifications, materials, features, or floor plans without notice. Actual position of house on lot will be determined by the site plan and plot plan. Renderings are artist's conception or model renderings and are not intended to show specific detailing. Some features shown are options that are available for an additional cost. Please ask your sales consultant for details. Square footage and dimensions shown are approximate and may vary in actual construction. Location, size and construction of doors, windows, walls, fireplaces, and any other items depicted may vary depending on elevation preference or choice of options and are subject to change without notice. Community Association fees may be required. The exterior home renderings depict models containing features or designs that may not be available on all homes or that may be available for an additional cost. Floor plans are the property of PulteGroup, Inc. and its affiliates and are protected by U.S. copyright laws. For further information, see our terms of use. This material shall not constitute a valid offer in any state where prior registration is required or if void by law. Life Tested® and Pulte Homes® are registered trademarks of PulteGroup, Inc. and/or its affiliates. ©2021 PulteGroup, Inc. and/or its affiliates. [10/21] PGI Realty, brokerage for PulteGroup, Inc. 7601 Jefferson Street NE Suite 320, Albuquerque, NM 87109. 505-761-9606



Pathmaker

2,392+ sq.ft.

4-5 Bedrooms

2.5-3.5 Bathrooms



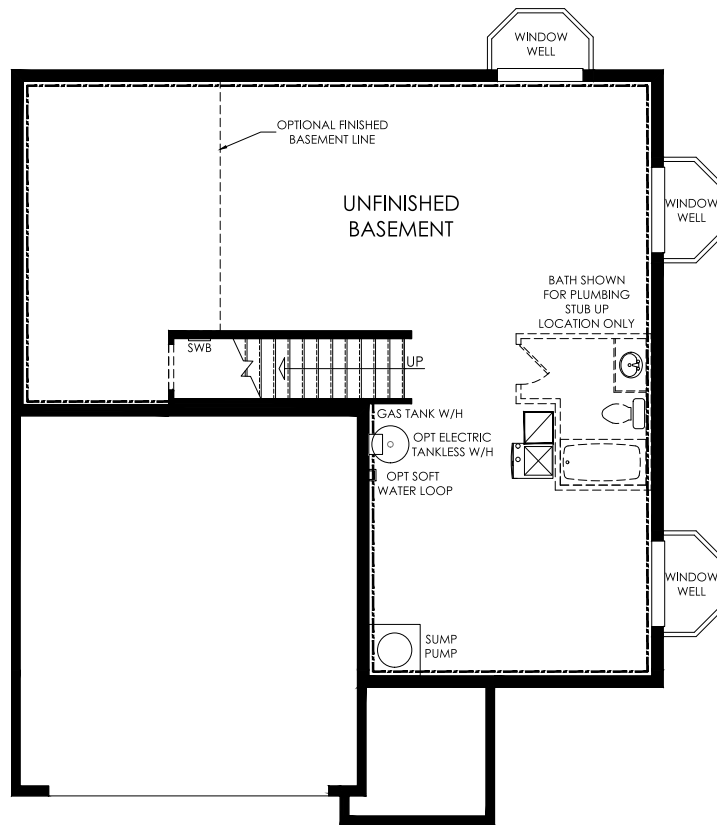
Home Exterior A



Home Exterior B



Home Exterior C



UNFINISHED BASEMENT FLOOR

The Aurora Highlands

3900 E. 470 Beltway

Aurora, CO 80019

720-594-6116

Additional options available. Please see sales consultant for details.



In our continuing effort to improve our product, Pulte Homes reserves the right to make changes or modifications to plans, specifications, materials, features, or floor plans without notice. Actual position of house on lot will be determined by the site plan and plot plan. Renderings are artist's conception or model renderings and are not intended to show specific detailing. Some features shown are options that are available for an additional cost. Please ask your sales consultant for details. Square footage and dimensions shown are approximate and may vary in actual construction. Location, size and construction of doors, windows, walls, fireplaces, and any other items depicted may vary depending on elevation preference or choice of options and are subject to change without notice. Community Association fees may be required. The exterior home renderings depict models containing features or designs that may not be available on all homes or that may be available for an additional cost. Floor plans are the property of PulteGroup, Inc. and its affiliates and are protected by U.S. copyright laws. For further information, see our terms of use. This material shall not constitute a valid offer in any state where prior registration is required or if void by law. Life Tested® and Pulte Homes® are registered trademarks of PulteGroup, Inc. and/or its affiliates. ©2021 PulteGroup, Inc. and/or its affiliates. [10/21] PGI Realty, brokerage for PulteGroup, Inc. 7601 Jefferson Street NE Suite 320, Albuquerque, NM 87109. 505-761-9606

